

Site C. – Proposed glass lookout at Mount Misery



C. Mount Misery Glass Lookout – Location and context

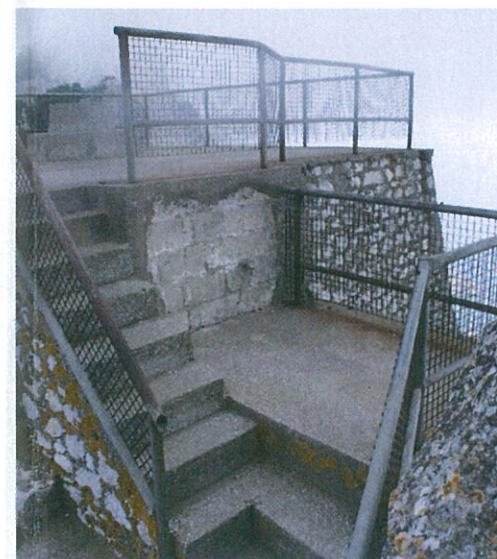
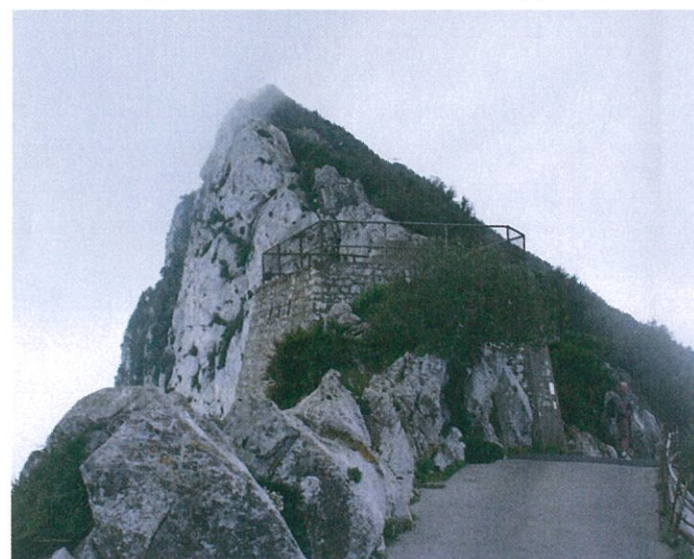


Former military lookout/position finding cell adjacent to Douglas Path, St Michael's Road

Proposed Site
Existing lookout adjacent to Douglas Path

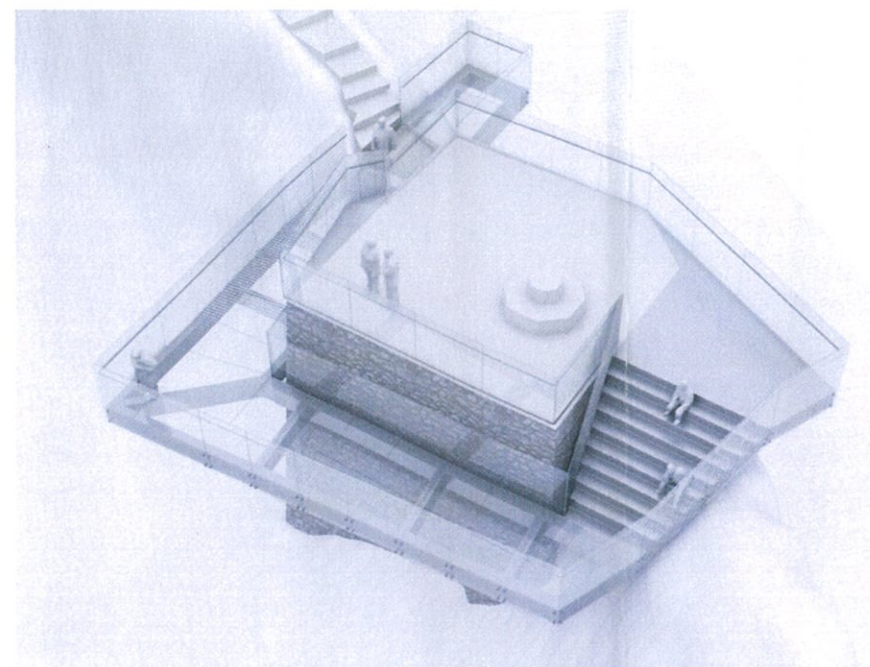
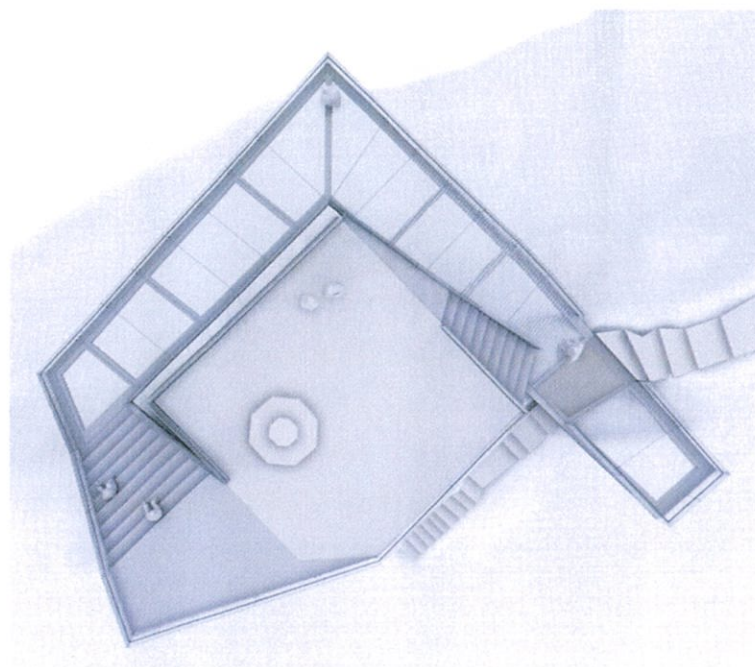
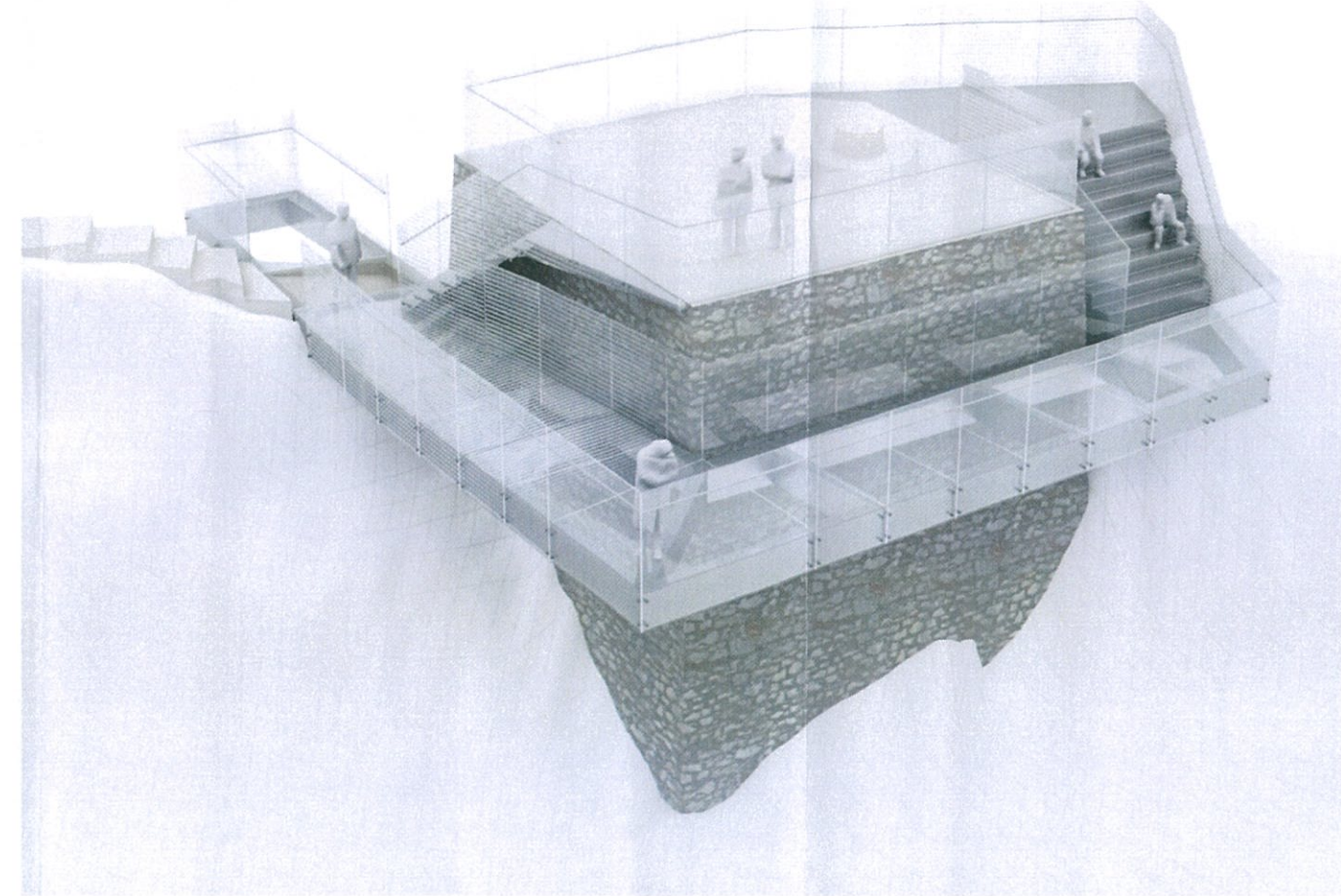
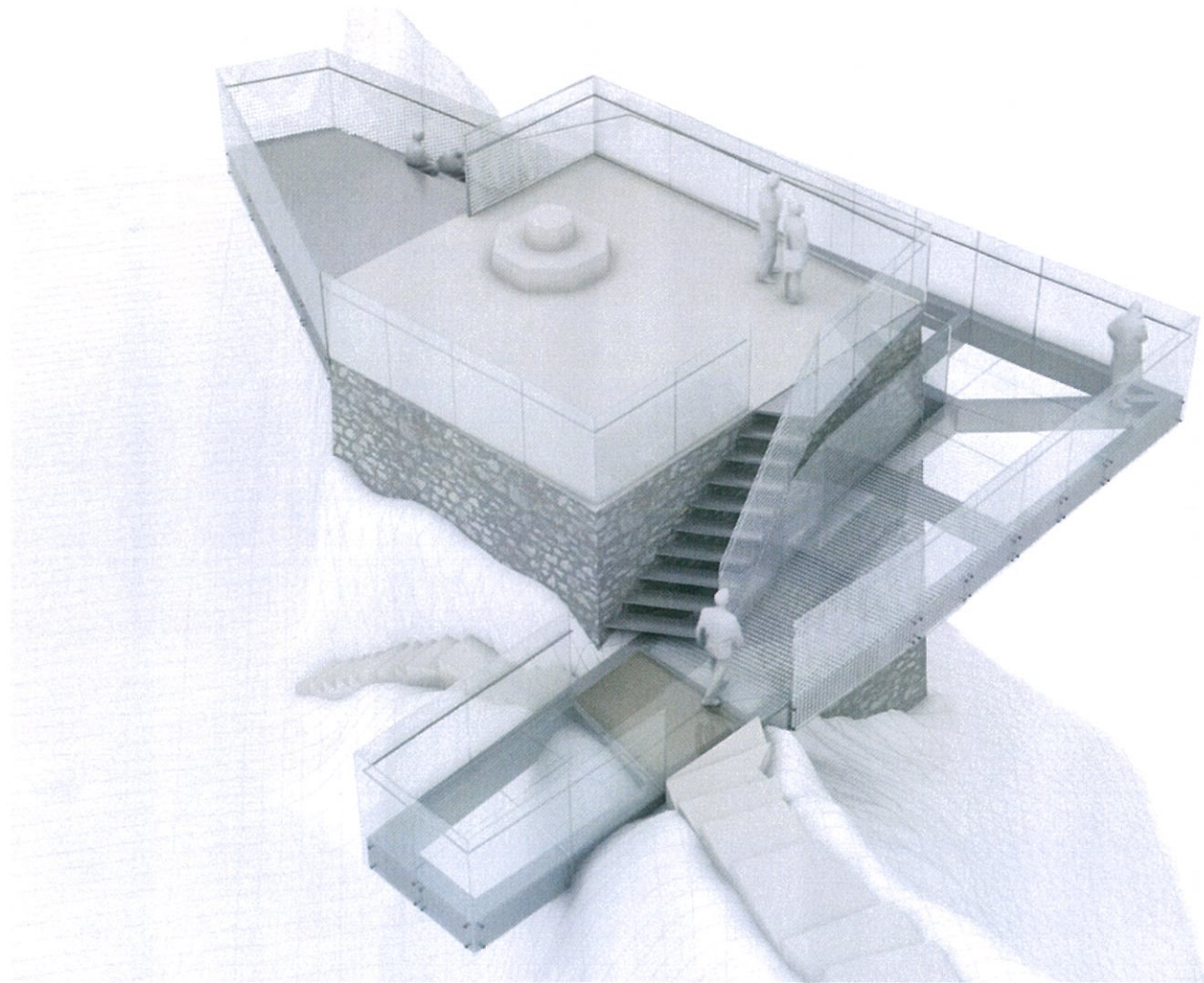


Existing condition: Former military point, currently used as a lookout by visitors to the Nature Reserve



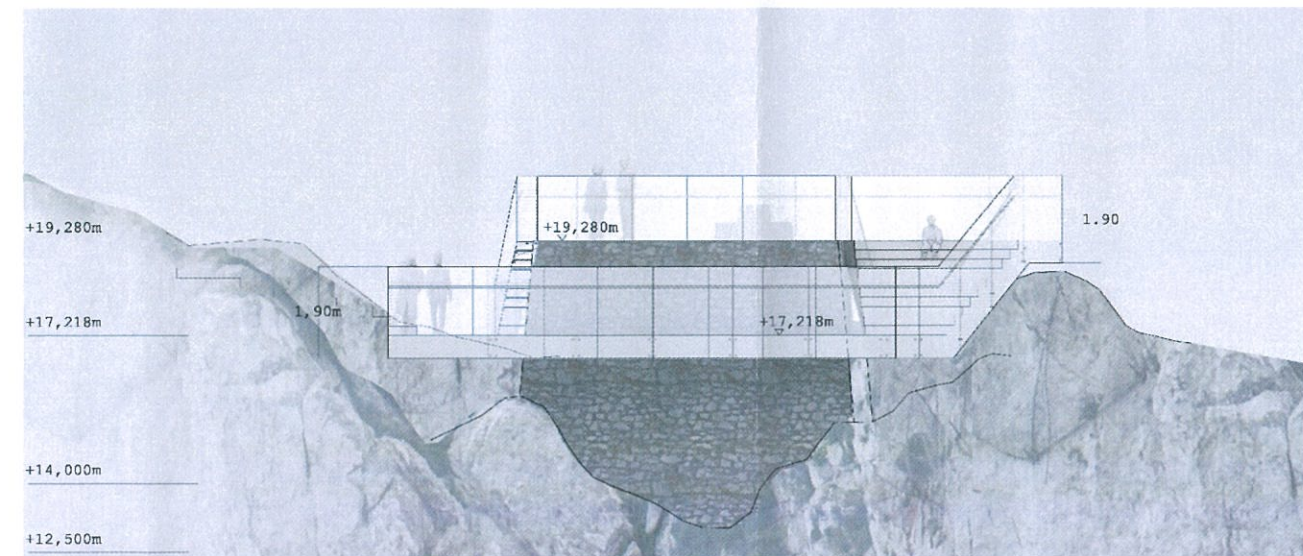
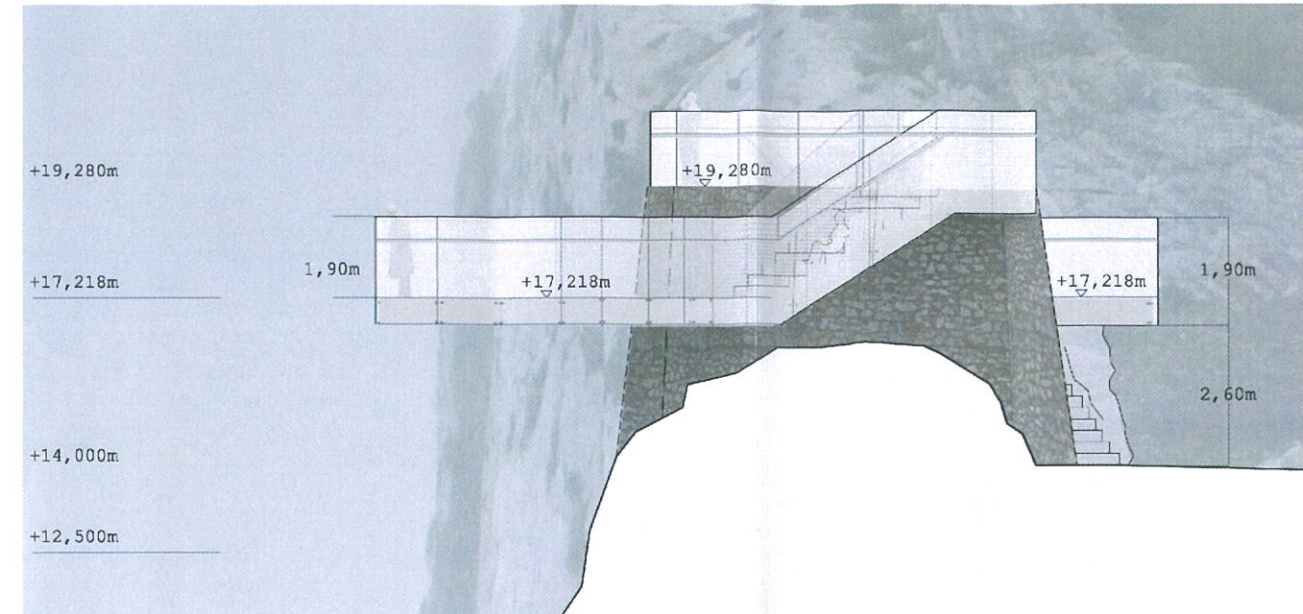
C. Mount Misery Glass Lookout – Proposed intervention

New glass extension to existing lookout platform, affording 360° views to visitors



C. Mount Misery Glass Lookout – Proposed intervention

New glass extension to existing lookout platform, affording 360° views to visitors



C. Mount Misery Glass Lookout – Proposed intervention

Artistic impression of proposed intervention.

